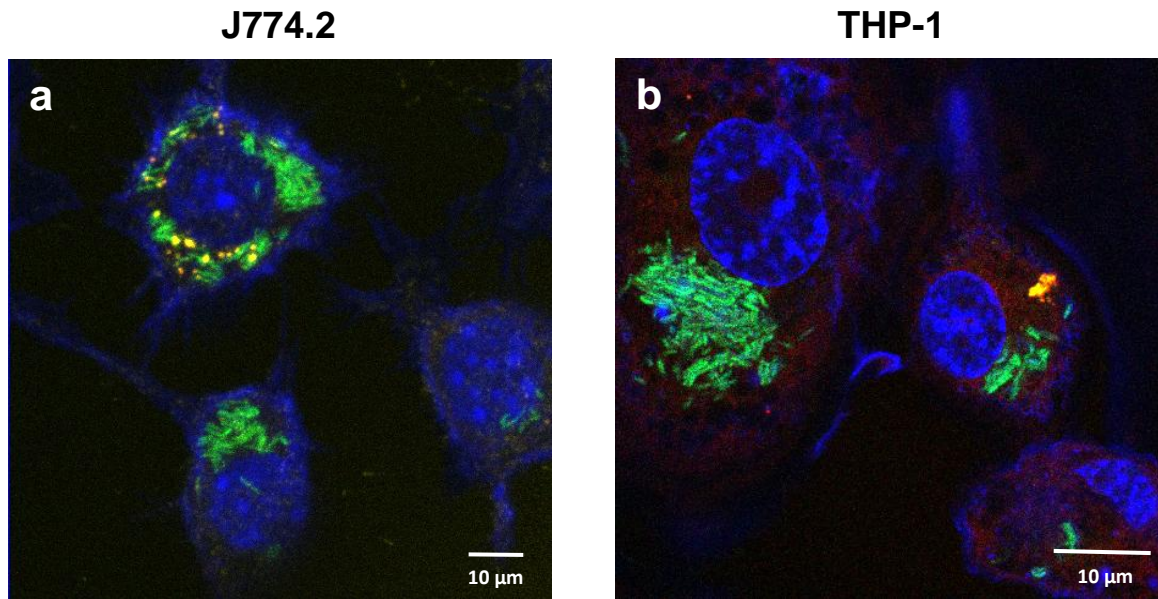


## Supplementary Figure S1



**Supplementary Figure 1. ALIS and *Mycobacterium abscessus* colocalization inside eukaryotic macrophagic cells at 1 hour after of ALIS-TAMRA treatment of Mabs-CIPS-GFP-infected cell cultures : J774.2 (a) and THP-1 (b).** Cell outline and nuclei were highlighted by F-actin staining with 1/400 phalloidine-atto 390nm (Sigma Aldrich) and DNA staining with 1/1000 Hoechst 33342 (Sigma Aldrich), respectively. For liposomal amikacin, excitation and emission wavelengths were as follows : Amikacin-TAMRA (ex 546 nm/em 579 nm), liposome Alexafluor (ex 650 nm/em 665 nm). Yellow: amikacin-TAMRA; Green: Mabs-CIPS-GFP; Blue: DAPI-stained DNA.

## Supplementary Table S1

Phenotype 1		Phenotype 2		Phenotype 3	
Strain #	MIC (mg/L)	Strain #	MIC (mg/L)	Strain #	MIC (mg/L)
#6	32	#1	16	#15	16
#18	16	#5	32	#21	16
#2	32	#9	16	#22	16
#43	16	#12	16	#41	16
#48	16	#13	16	#36	8
#51	16	#19	32	#11	16
#53	16	#4	16	#17	16
#56	32	#12	16	#20	32
#7	32	#33	16	#58	32
#14	16	#51	16	#3	32
#24	8	#52	8	#8	8
#42	16			#16	16
#50	16			#44	16
#55	16			#54	16
#23	8			#57	32
#34	16			#1	16
#36	16			#19	8
#73	16			#74	16
#61	32			#62	16
#63	16			#64	16
#66	16				
#67	16				
<b>Mean MIC</b>		<b>19,2</b>		<b>19</b>	
<b>SEM</b>		<b>8,4</b>		<b>8,45</b>	
					<b>17,6</b>
					<b>8,1</b>