



HAL
open science

Regulation of iron metabolism by sideroflexin SFXN1

Justine Venelle, Arnaud Guillaume, L Perard, Inge Köhl, Charlotte Izabelle,
Ioana Ferecatu, Isabelle Guénal, Nathalie Le Floch

► **To cite this version:**

Justine Venelle, Arnaud Guillaume, L Perard, Inge Köhl, Charlotte Izabelle, et al.. Regulation of iron metabolism by sideroflexin SFXN1. Colloque du Réseau Meetochondrie 2024, May 2024, Lège Cap Ferret, France. hal-04579551

HAL Id: hal-04579551

<https://hal.uvsq.fr/hal-04579551>

Submitted on 17 May 2024

HAL is a multi-disciplinary open access archive for the deposit and dissemination of scientific research documents, whether they are published or not. The documents may come from teaching and research institutions in France or abroad, or from public or private research centers.

L'archive ouverte pluridisciplinaire **HAL**, est destinée au dépôt et à la diffusion de documents scientifiques de niveau recherche, publiés ou non, émanant des établissements d'enseignement et de recherche français ou étrangers, des laboratoires publics ou privés.

Regulation of iron metabolism by sideroflexin 1

Venelle J.^{1*}, Guillaume A.¹, Perard L.², Kühl I.², Isabelle C.³, Ferecatu I.³, Guénel I.¹, Le Floch-Leleu N.^{1*}

¹ Laboratoire de Génétique et Biologie Cellulaire (LGBC), Université de Versailles Saint-Quentin-en-Yvelines, Montigny-Le-Bretonneux

² Institut de Biologie Intégrative de la cellule (I2BC), CNRS, Gif-sur-Yvette

³ Plateforme de Microscopie électronique de l'Université Paris Cité, Faculté de Pharmacie

* Mail to: justine.venelle@uvsq.fr or nathalie.leleu@uvsq.fr

Introduction

SIDEROFLEXINS

- SFXNs are conserved in eukaryote
- Mammalian SFXNs → 5 members (SFXN1-5)
- Mitochondrial carriers (SLC56)
- SFXN1 main function = serine transporter
- SFXN1 potentially involved in iron homeostasis → controversial

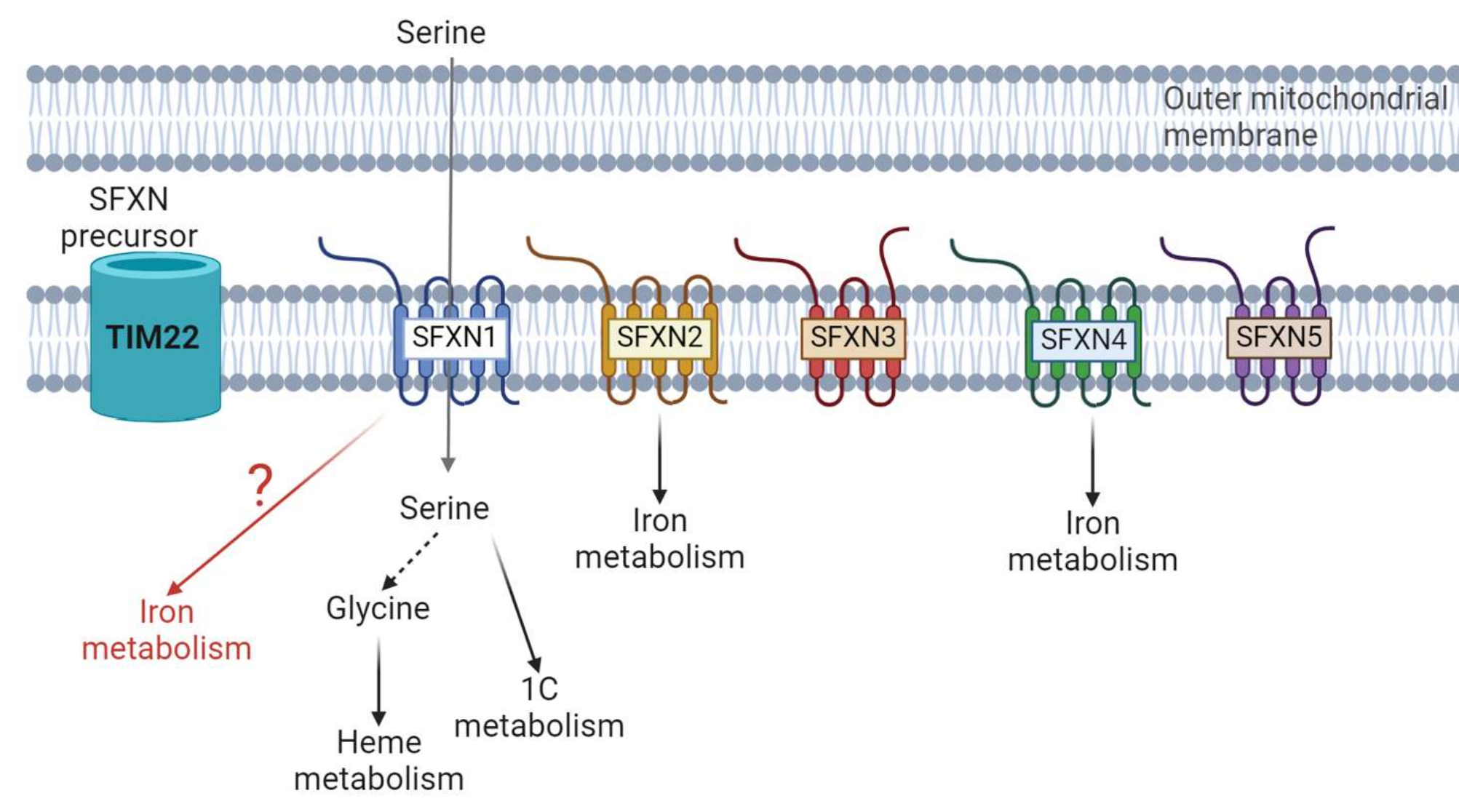


Fig 1. Functions of the mammalian sideroflexins (SFXN). Created with BioRender

FERROPTOSIS & signaling pathway

- Cell death driven by iron-dependent lipid peroxidation
- Ferroptosis is activated physiologically and pathologically
- Deregulation of iron homeostasis, ROS & glutathione metabolism trigger ferroptosis

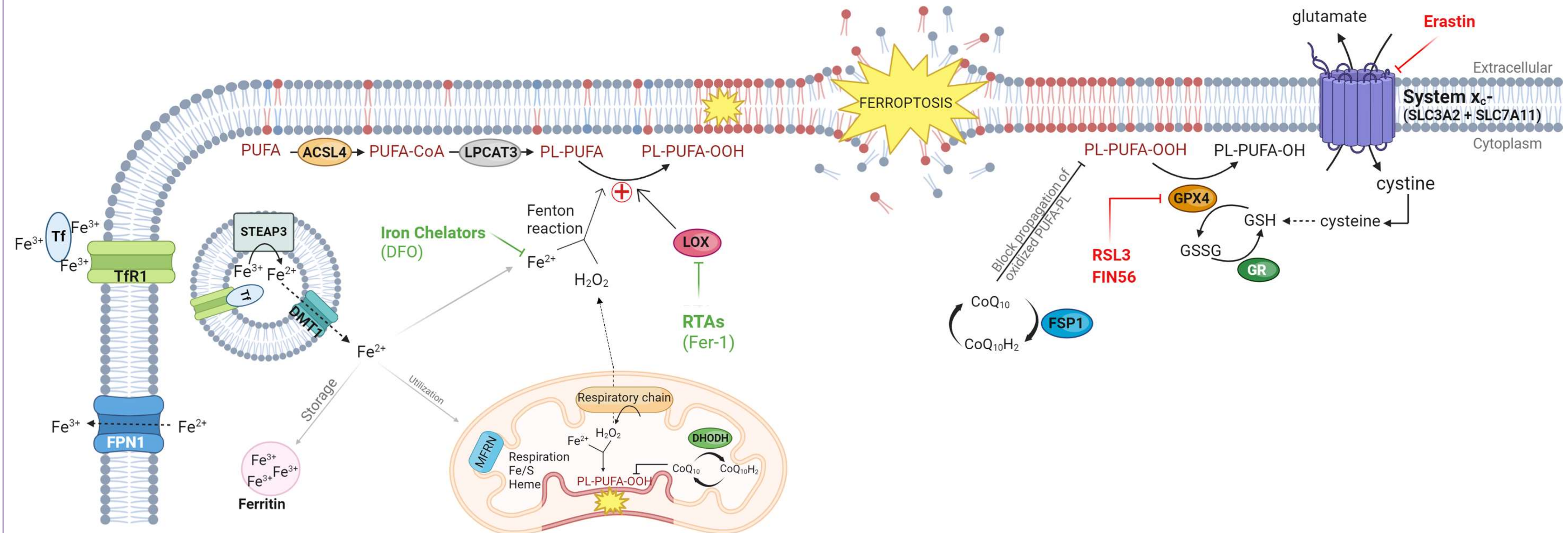
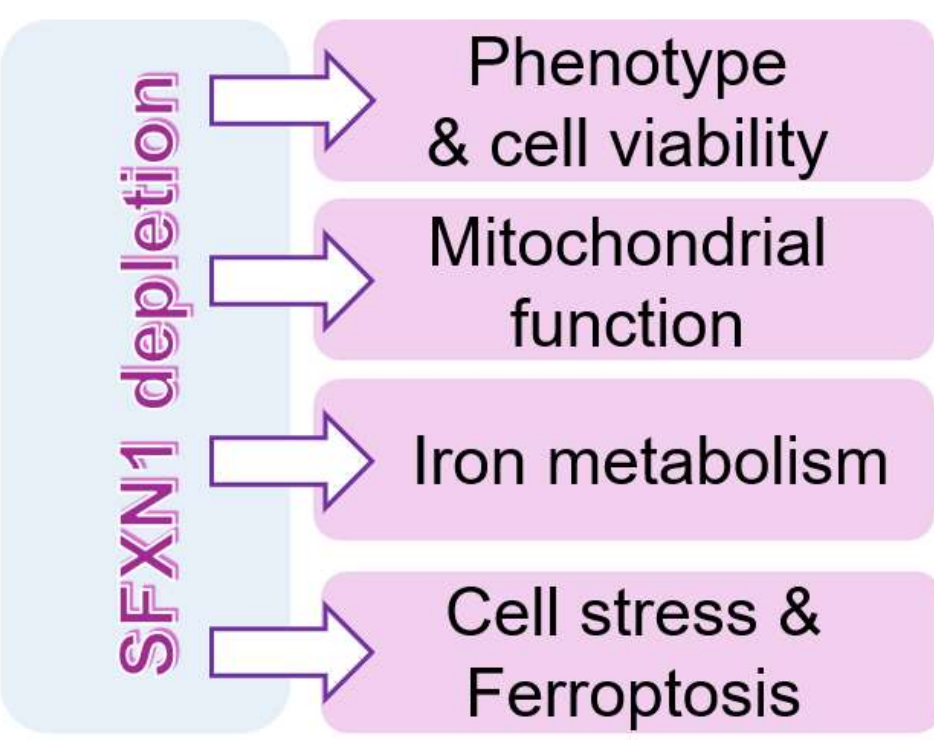


Fig 2. Mechanisms of ferroptosis. Ferroptosis inducers (red) and ferroptosis suppressors (green) are shown. Created with BioRender

Consequences of SFXN1 depletion on iron metabolism and ferroptosis ?

METHODS

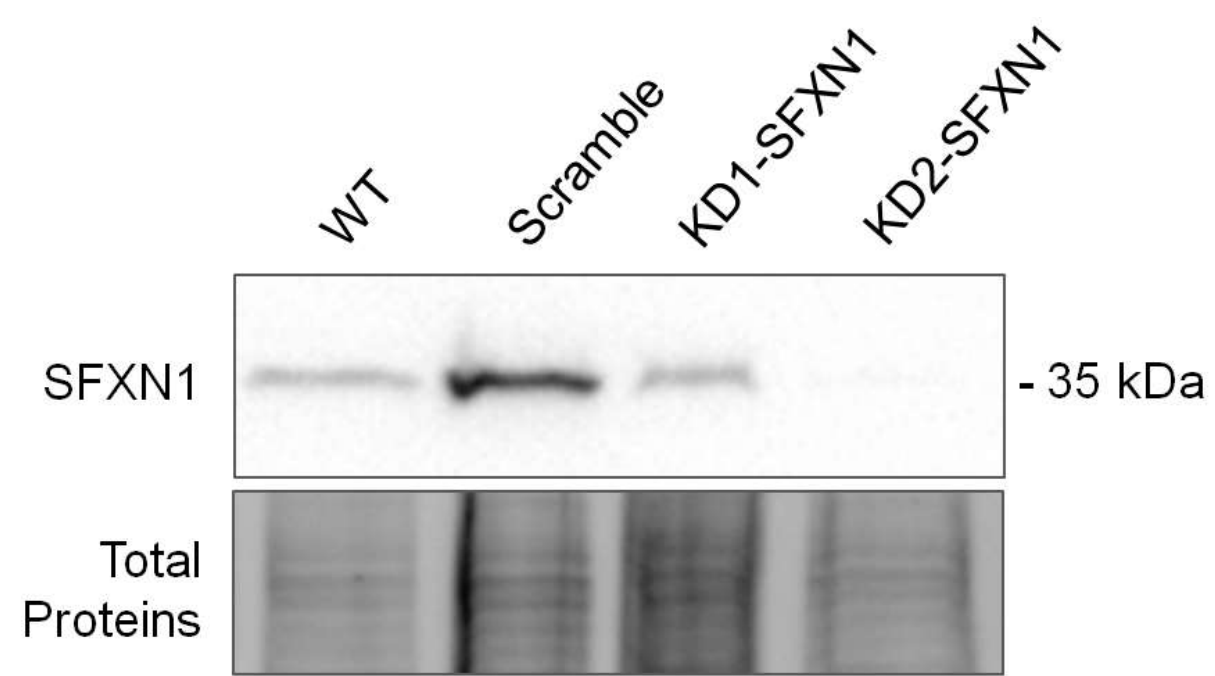
Scientific questions



Cellular model

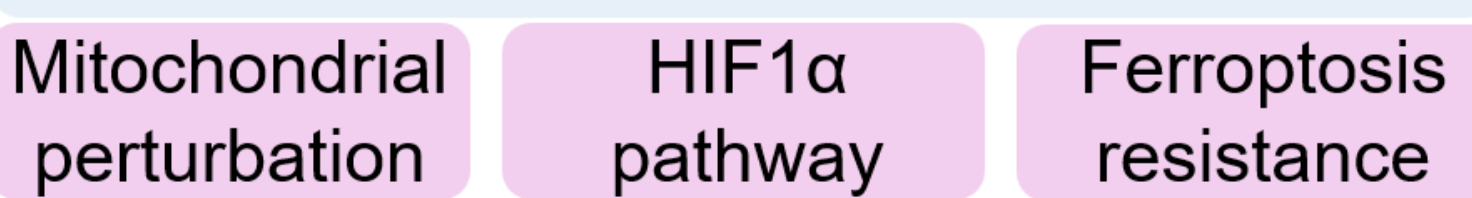
- HT1080 cancer cells (fibrosarcoma) sensitive to ferroptosis inducers
- Stable knockdown of SFXN1 (KD1 & KD2 – SFXN1) → 2 different shRNA targeting SFXN1 transcripts
- shRNA-Scramble as control

Verification by western-blot

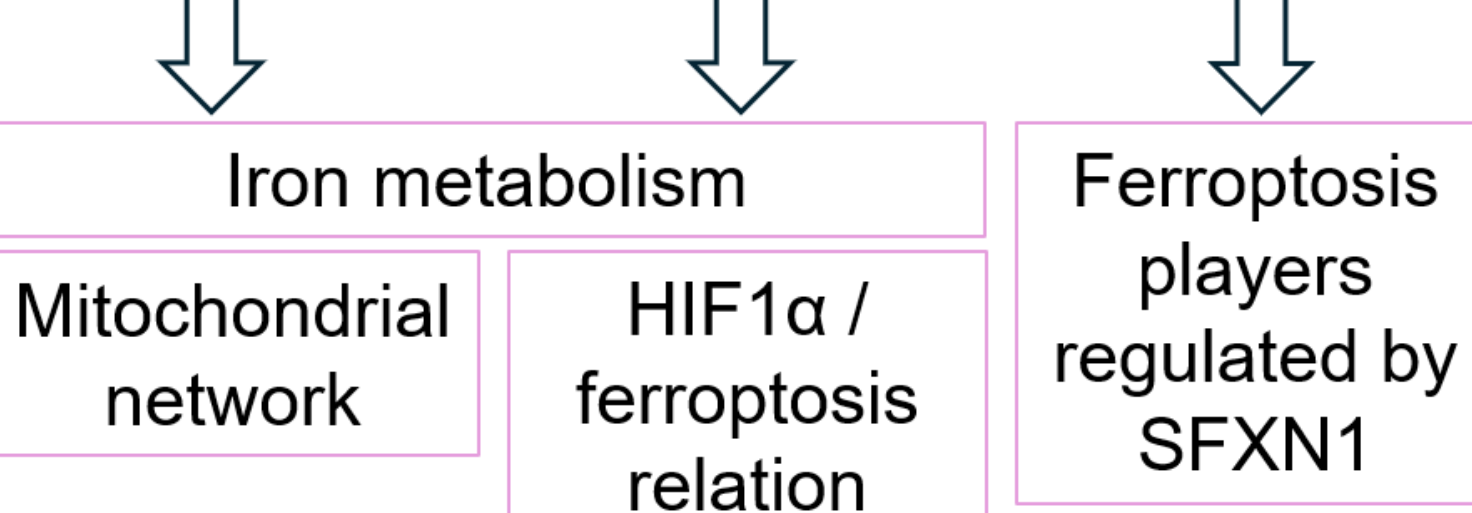


CONCLUSION

SFXN1 depletion



Perspectives



Open questions :

- Does SFXN1 depletion allows ferroptosis resistance through the regulation of ROS formation and/or iron homeostasis and/or oxidative stress response ?
- What are the signaling pathways allowing the induction of HIF1α during SFXN1 depletion ?

References:
Kory N et al. 2018. SFXN1 is a mitochondrial serine transporter required for one-carbon metabolism. Science. doi: 10.1126/science.aat9528. PMID: 30442778; PMCID: PMC6300058.

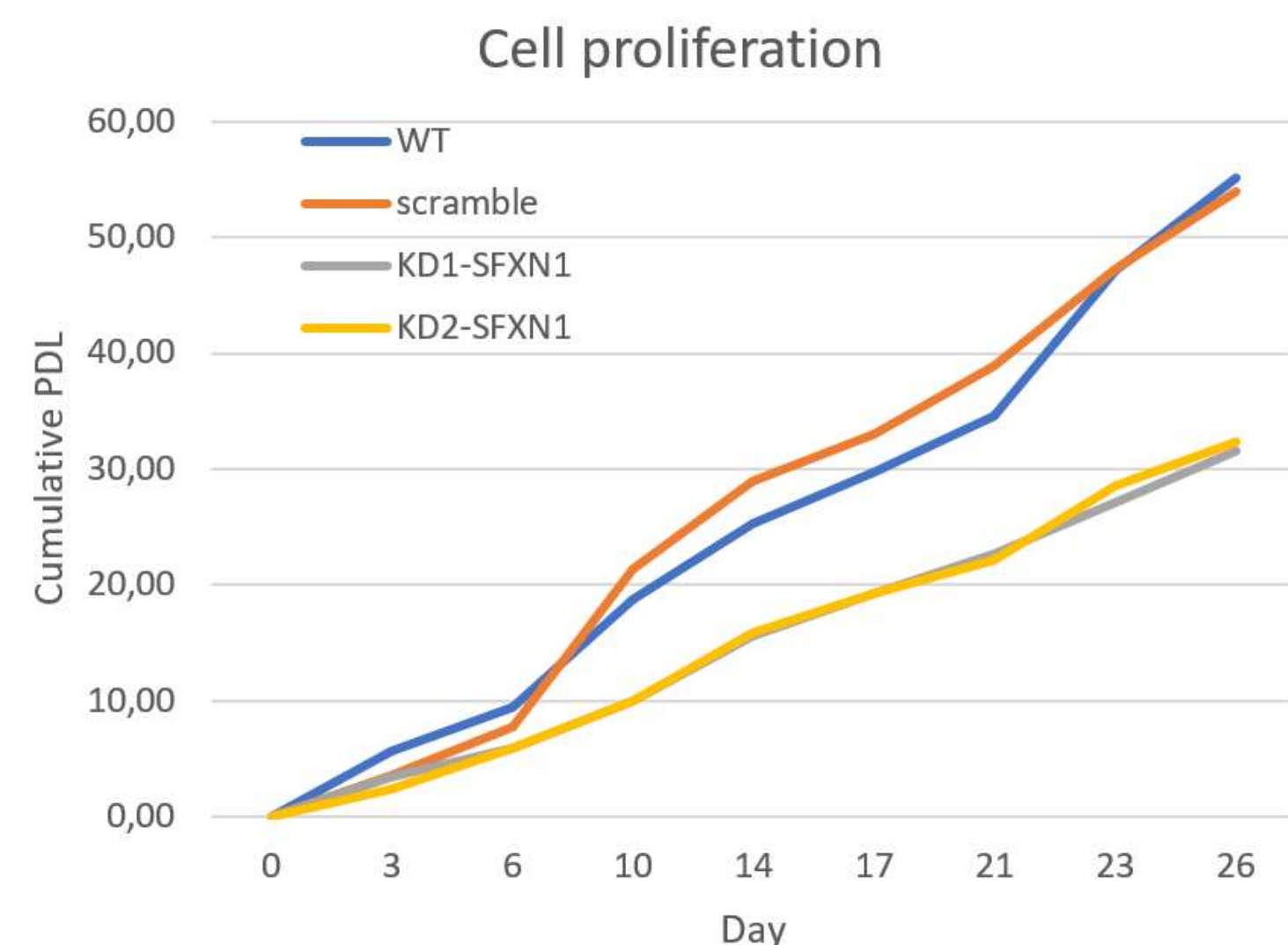
Acoba MG et al. 2021. The mitochondrial carrier SFXN1 is critical for complex III integrity and cellular metabolism. Cell Rep. doi: 10.1016/j.celrep.2021.108869. PMID: 33730581; PMCID: PMC8048093.

Tifoun N et al. 2021. Insights into the Roles of the Sideroflexins/SLC56 Family in Iron Homeostasis and Iron-Sulfur Biogenesis. Biomedicine. doi: 10.3390/biomedicine9020103. PMID: 33494450; PMCID: PMC7911444.

Stockwell BR. 2022. Ferroptosis turns 10 : Emerging mechanisms, physiological functions, and therapeutic applications. Cell. doi: 10.1016/j.cell.2022.06.003. PMID: 35803244; PMCID: PMC9273022.

RESULTS

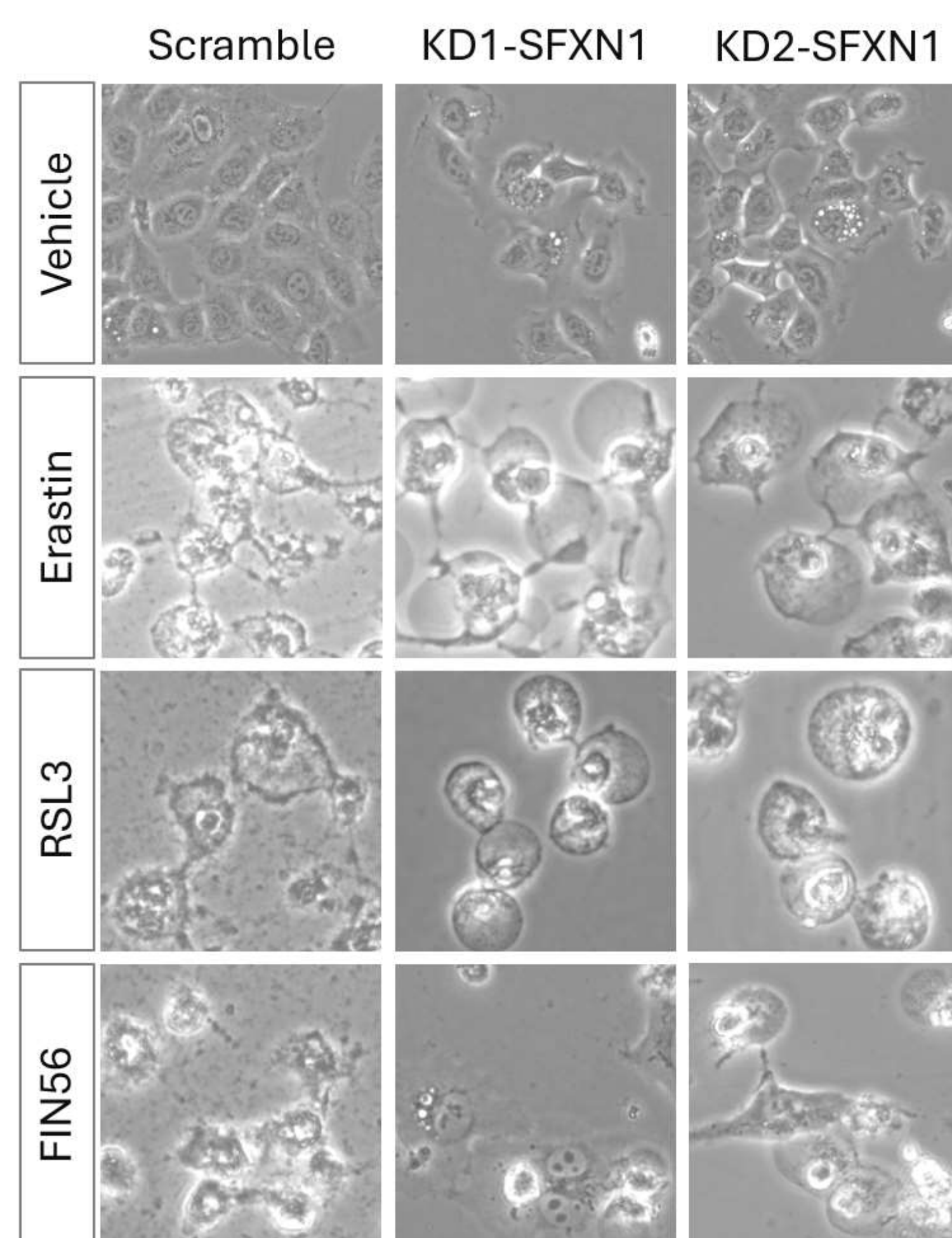
Cellular phenotype



- KD cells proliferated slowly in full medium compared to control cells
- Test the viability and cytotoxicity (stress oxidant condition)

Ferroptosis sensibility

Cellular morphology

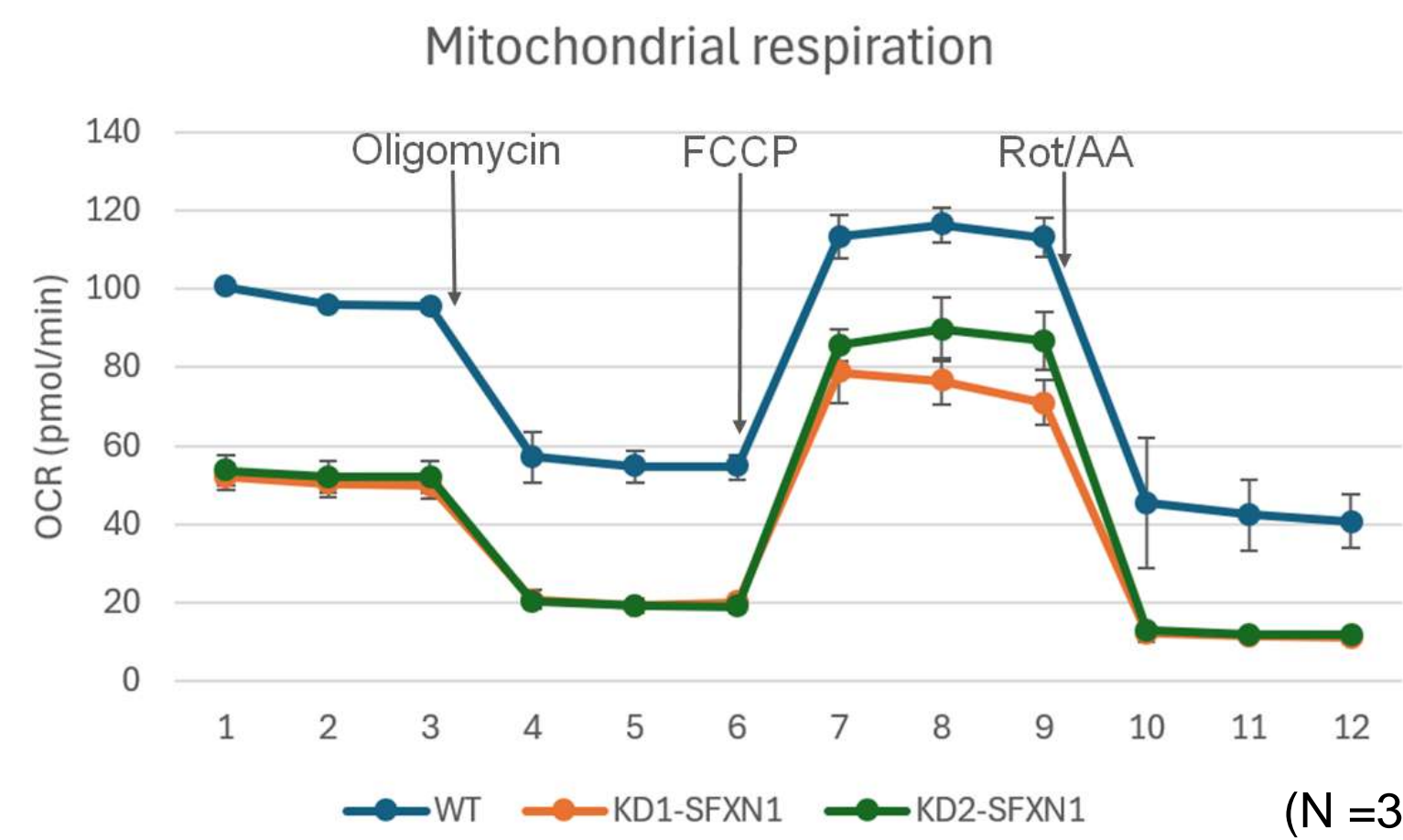


24H treatment with 10µM of erastin, 1µM of RSL3 or 5µM of FIN56

- Delay of ferroptosis, KD cells appear to be resistant (or less sensitive to ferroptosis inducers)
- What are the mechanism allowing this resistance ?

Mitochondrial function & morphology

Mitochondrial respiration by Seahorse

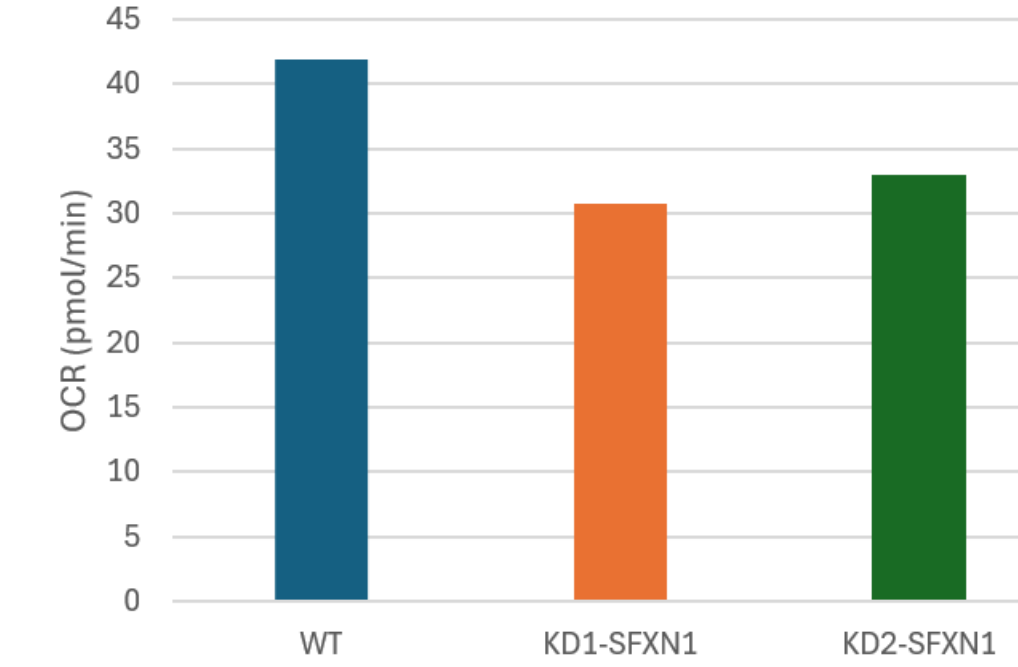


- Oligomycin inhibits ATP synthase
- FCCP uncoupling agent = disrupts mitochondrial membrane potential
- Rotenone / Antimycin (Rot/AA) inhibits complex I and III

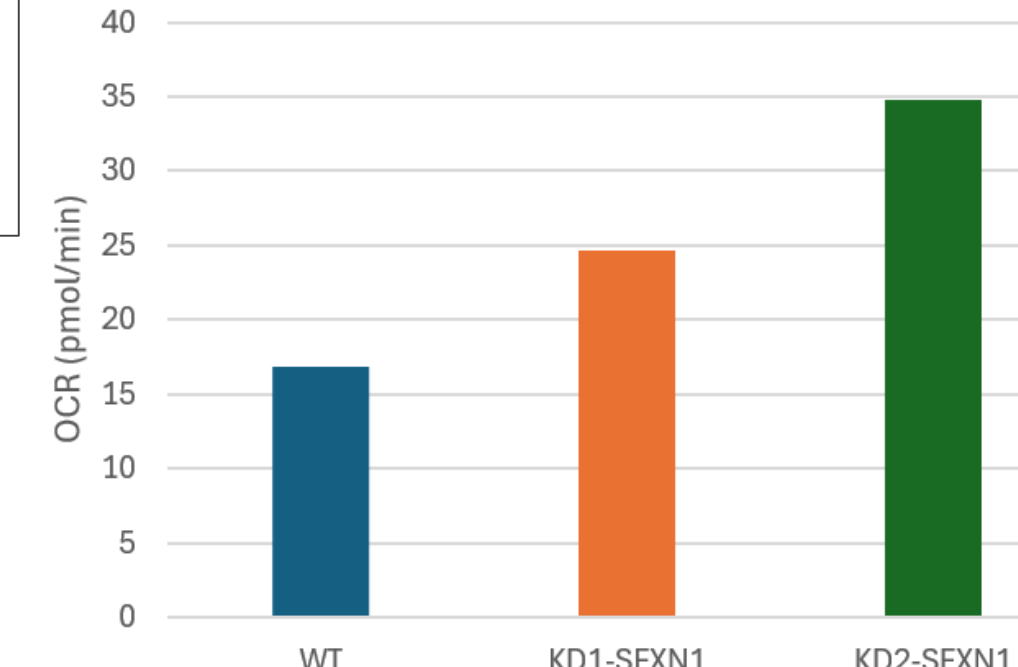
- SFXN1 depletion seems to decrease the mitochondrial respiration
- Decrease of ATP production
- Increase of spare capacity

→ Mitochondrial function alteration results from a disorganization of respiratory complexes ? Problem with complex activity ? Alteration of mitochondrial morphology ?

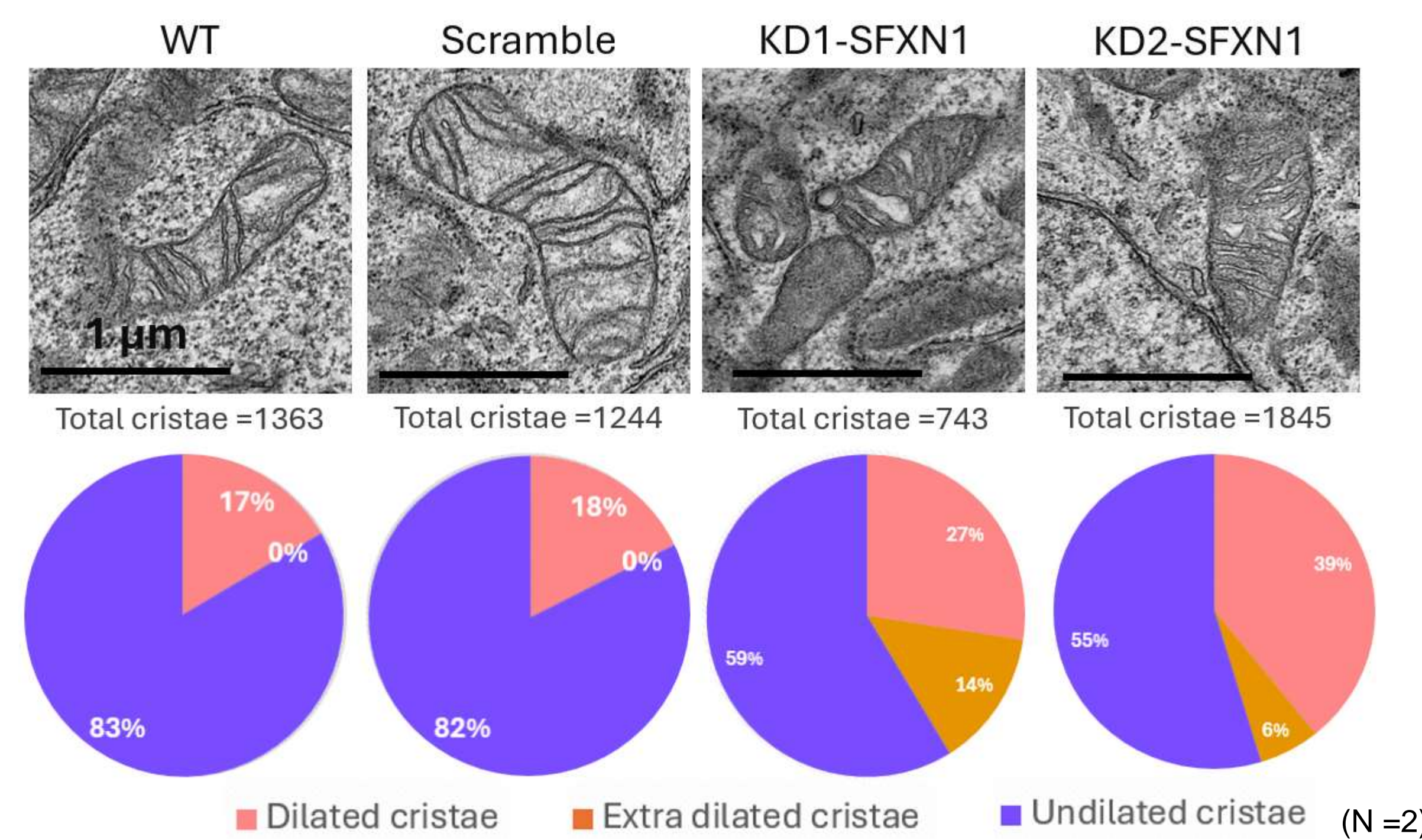
ATP Production



Spare Respiratory Capacity



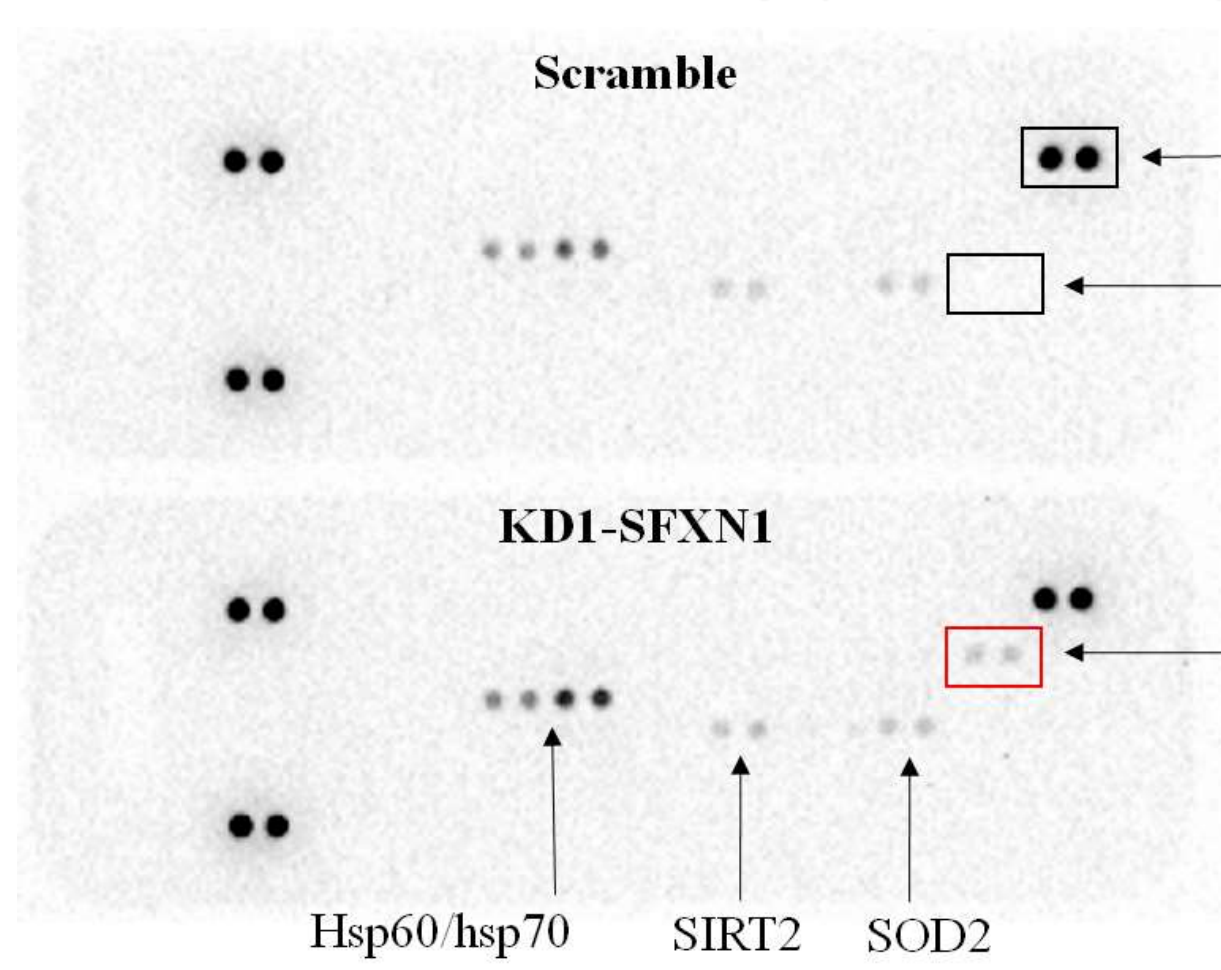
Mitochondrial morphology by TEM



- Altered cristae morphology in KD cells
- Test mitochondrial biogenesis and mitochondrial network
- Investigate the composition of the complexes maintaining cristae junctions

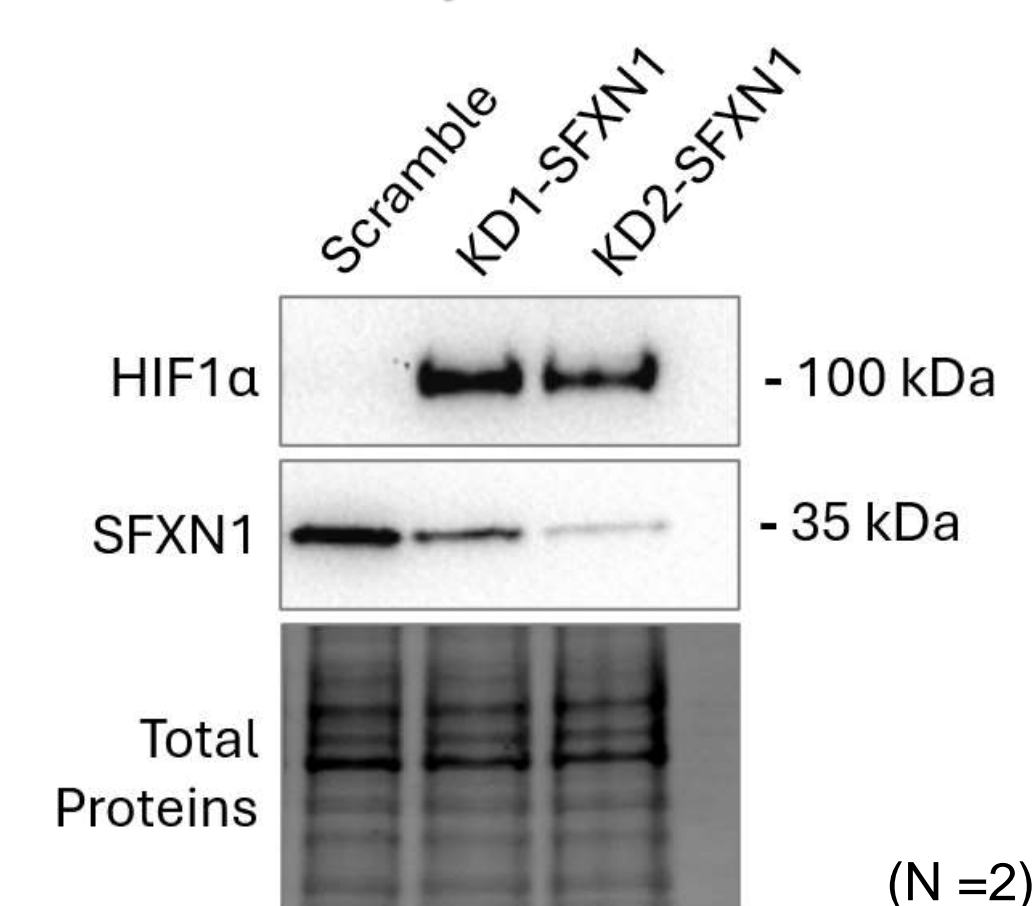
HIF1α is induced upon SFXN1 depletion

Proteome Profiler Array (cell stress kit)



- Same results with KD2-SFXN1

HIF1α by western-blot



- HIF1α seems to be upregulated in KD cells
- Iron can regulate HIF1α, so does SFXN1 can regulate HIF1α through iron ?